

# Nest 20L.


**Grey wall and black frame**  
**From \$34,500 INC GST**


 2 bed

 1 bath

 1 kitchen

## Specifications

 Size when opened:  
5900 x 6420 x 2260mm

 Size when closed:  
5900 x 2260 x 2550mm

 Area: 37m<sup>2</sup>

 Weight: 4250kg

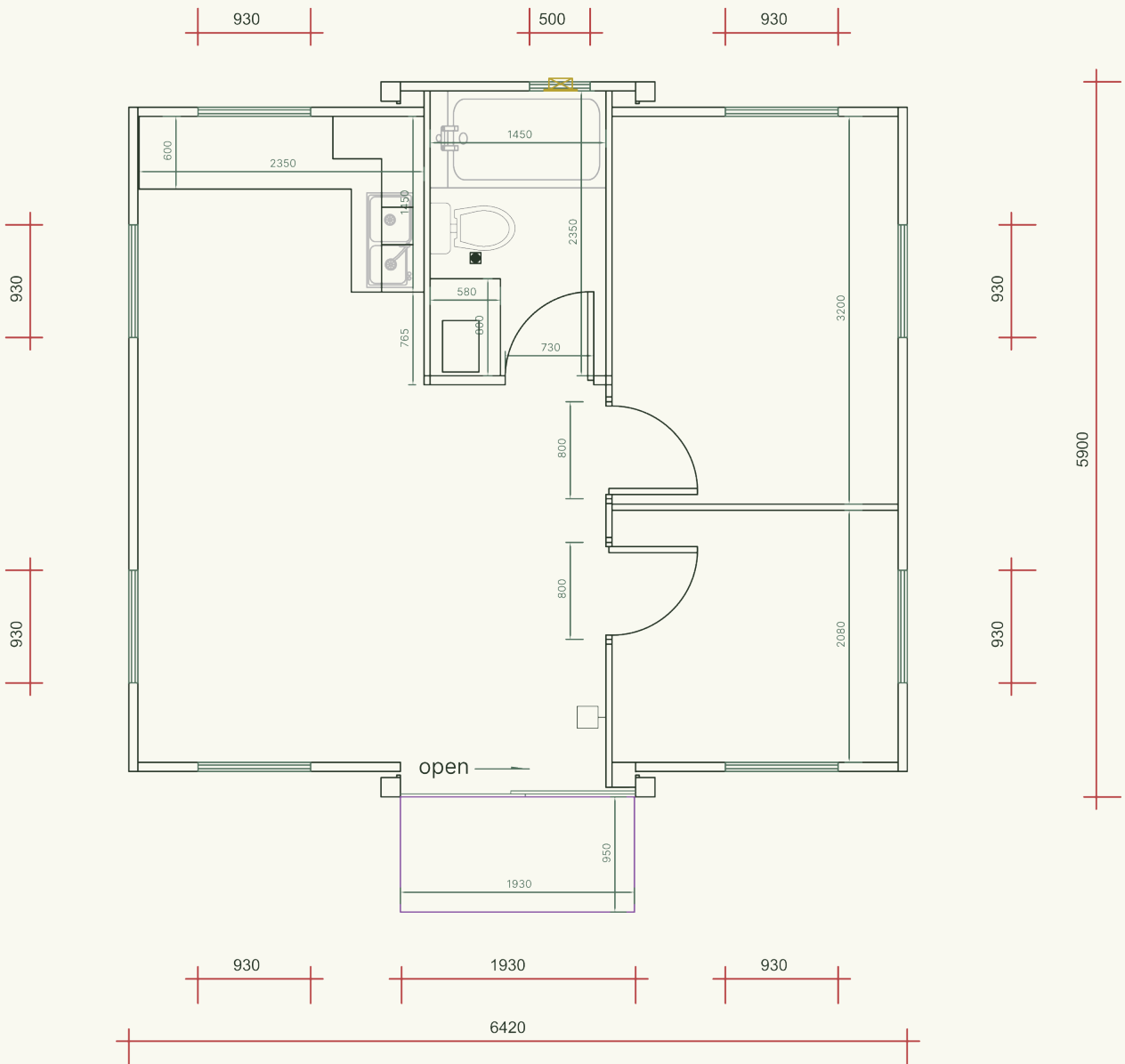
 Internal ceiling height: 2260mm

The Nest 20L presents a thoughtfully designed two-bedroom layout, complemented by a kitchen with natural stone benchtops and overhead cupboards. The bathroom is elegantly appointed with a stone vanity, shaving cabinet, and provision for a washing machine. Additional features include metal fly screens on doors and windows, provision for air conditioning, and an entry canopy with lighting for added comfort and convenience.

### Features:

- Two-bedroom layout
- Kitchen with overhead cupboards and a natural stone benchtop
- Bathroom featuring a natural stone vanity, shaving cabinet, and provision for a washing machine
- Metal fly screens on doors and windows
- Provision for air-conditioning
- Includes an entry canopy and lighting
- Certified electrical and plumbing
- This unit has customisable options

# Nest 20L.



Please note that all images are for illustrative purposes only.  
Actual product specifications and inclusions may vary.